

## Things to Remember:

- Appropriate clothes to suit the weather: A **coat** that will keep them warm and dry most probably!
- Bring fresh **water** in their named 'Shap School' water bottle every day.



- We aim to check **reading books** every Monday, Wednesday and Friday for Reception children. Every Tuesday Nursery can have change of library book.



- **PE Kits** for Reception Children – T-shirt, shorts, socks, trainers, hoody or fleece and tracksuit bottoms all names in a large ruck sack would be ideal. More information can be found on our website here: [Uniform Information | Shap Endowed CE Primary School](#) Nursery do not change for PE.



- Please can RECEPTION have PE kits in every day. If your child's ears are pierced they will be covered with plasters for the PE lessons
- Please can all clothing, shoes and personal items be named!
- Communication with teachers and messages posted by them are sent regularly on TEAMS via either the group for NURSERY or the group for RECEPTION or by personal messages.



Please feel free to come and see us to talk to us anytime.

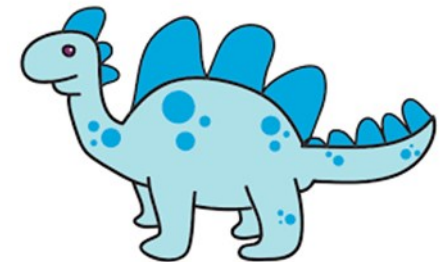
Thank You

## Catbells: Reception and Nursery Class

### Topic Information for Parents and Carers

### Second Half of the Autumn Term 2024

### Topic: Dragons V Dinosaurs



Class Teacher: Mrs. Vanessa Kelsall  
Mrs Chappell (Tuesday & Thursday afternoon)  
Nursery Leader & Senior Teaching Assistant:  
Mrs Suzanne Hutchinson

All Reception and Nursery Lessons are taught through the 7 Early Years Foundation Stage (EYFS) Areas of Learning and Development: Prime areas: Communication and Language, (CL) Personal, Social and Emotional Development (PSED) and Physical Development (PD). The 4 other specific areas are Literacy (L), Mathematics (M), Understanding the World (UW) and Expressive Arts and Design (EAD)

**PSED:** Through the theme of 'Getting on and Falling Out' the children will explore emotions. Circle time discussions will explore a range of emotions and strategies to cope and regulate different moods. We will aim to build self-confidence and constructive relationships. Friendships will continue to build with Year 6 buddies, on Thursday afternoons.

**Maths: Nursery:** Naming and recognising simple 2D shapes and different types of patterns.

**Reception:** White Rose Maths inspired learning exploring different representations of 4 and 5, perceptual subertising, matChing representations to numerals, 1 more and 1 less. Shapes with 4 sides will also be explored as well as distinguishing typical routines that occur during the day and at night.

**RE Theme:** 'Special Babies' including Jesus. Thinking about the importance of Christmas and what happens at church. Think about the special things used to share God's love at this time of year, including lights, candles, cards and the gifts that were given on Baby Jesus's birth day. Think and develop ideas about Jesus as a grown up.

**Enhancements:**

6th Nov, 4th Dec— Outdoor Education with Emma Daley

13th, 27th Nov—PE Lucy Potter

27th Nov—Ruck Sack of Rhymes

6th Dec—Reception Trip to Kendal

**Important Dates:**

15th Nov—Children in Need

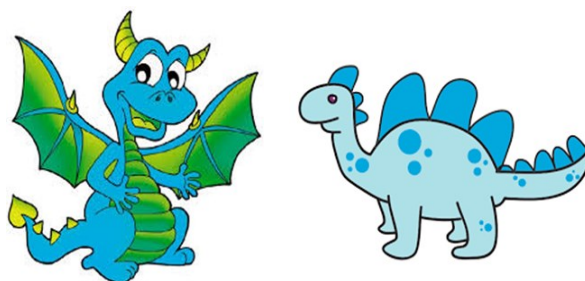
Thurs 28th Nov —Come and Play

Dec 11th—Nativity

Dec 20th—Service at St.Michael's church

**CL:** The areas set up around the classroom will encourage a language rich environment. Opportunities will be given to develop teacher lead learning and real life experiences eg a doctors clinic and Santa's workshop. We aim to encourage the children to re-enact scenarios from experiences from stories and real life experiences.

All the continuous provision areas in the classroom aim to reflect and encourage speech. The adults in the classroom work in all the areas to question the children to introduce new vocabulary inspire learning, developed from the children's own Interest as well as enveloping class learning.



**L:** Reception take part in daily ELS phonics phase 2 /3 scheme lessons Reading & writing. Simple letters and words related to sounds and HRSW Harder to Read and Spell Words learned

**Nursery**—phase 1— listening & identifying environmental and instrumental sounds

**Focus Book for Talk for Writing:** Zog, Zog & the Flying Doctors We're Going on a Bear Hunt

**Other Key Books:** The Paper Bag Princess, Dinosaur Roar, Dinosaurs love Underpants, Non Fiction Dinosaur books, George and the Dragon. Charlie Stinky Socks, The Nativity Story

**PD:** The children are able to access fine and gross motor activities set out in the indoor and outdoor provision.

**PE** lessons will include let's move dance programmes following the theme 'Diwali' and 'Christmas'. Games sessions with Lucy Potter

**UW:** Compare life in the past to animals alive now. Make sense of different environments and habitats. Explore a range of dinosaurs. Learn their names and body parts. Understand a paleontologist job and introduce Mary Anning as the first female to find a fossil. Learn about animals and their young / needs and requirements.

Think about what we can do to help wild animals in our environment

Zog's links to keeping healthy and visits to the doctors clinic, hospital and dentist.

Understanding why oral hygiene is important.

**EAD:** Focus on textiles, sewing and threading. Explore texture and collage using a variety of materials and patterns. Chrstimas Crafts.

**Music:** Develop musical understanding through the Charanga unit 'My Stories!' Develop patterns using our bodies and percussion instruments.

Develop a repertoire of Christmas Songs, brush your teeth, The Big Diosuaur